

maison
kara.



CEDARS, PH3 CONCEPT.

Client

Innovation Building - Contact: Ned Johnson

Date

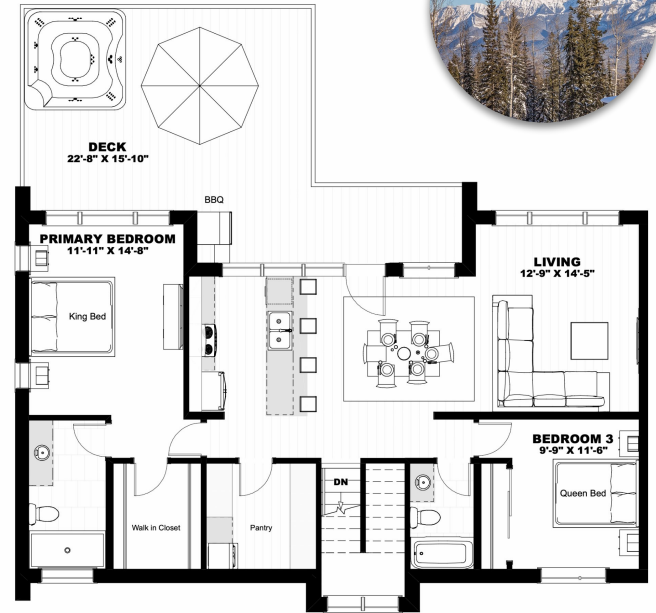
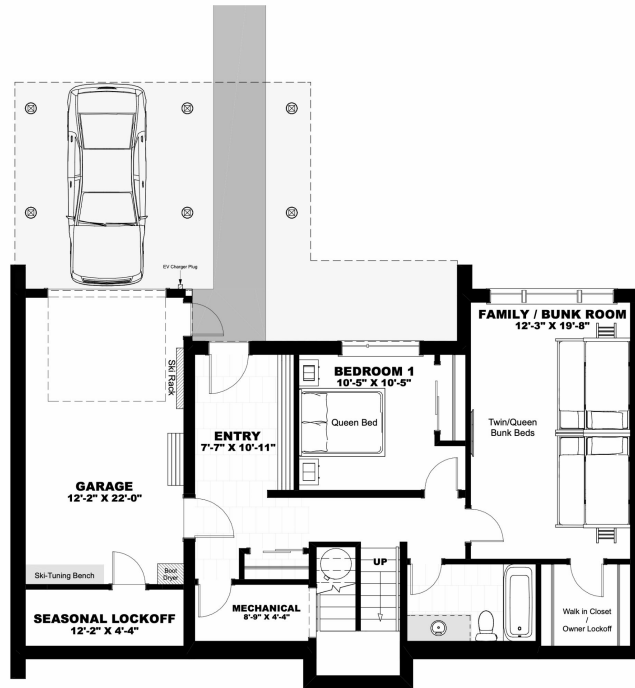
Monday, December 16th 2024

Submission

Ph2: Design Concept, Package #4



TYPICAL FLOOR PLAN.



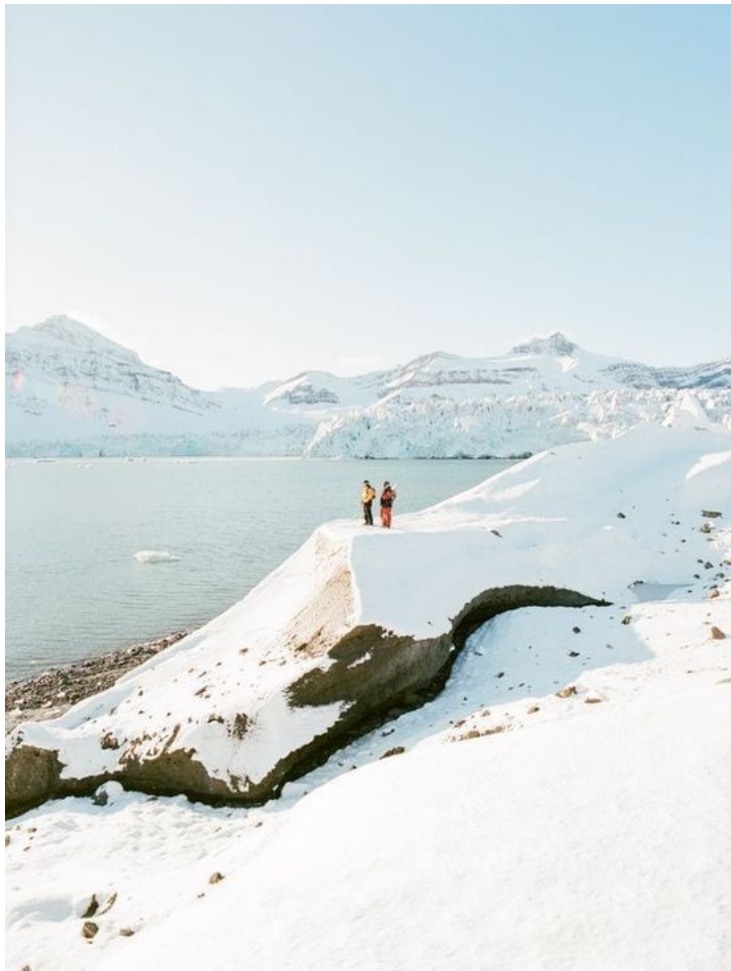
Typical Floor Plans: Reference

Please note, all millwork *design* and cladding *placement* shall be typical with each Colour Scheme; alterations with Scheme are in colour only.

GENERAL LOOK & FEEL.



Structured Shapes with an emphasis on Function | Neutral, Warm and Tonal Materials with Naturalistic Texture | Moments of Deep, Grounding Contrast



Blue Bird is the morning after a storm. A day marked by cloudless blue skies, where the cotton-wool-like cloud that covered the sun passed, and the sun's rays provide clear light.

BLUEBIRD SAMPLES.



Note: Imagery for reference only. Refer to Control Samples.

BLUEBIRD COLOURS.



Porcelain Floor Tile - Stone Tile (ST)
Cliffstone, Grey Tenerife Matte
24" x 24" & 12" x 24" (varies with loc.)



Carpet - Shaw Floors
Tonal Comfort Blue
Shoreline Haze, 100% Nylon



Porcelain Tile - ST
Gravel, Earth Matte
12" x 24"



Quartz - Silestone
Miami, Vena Polished
Slab, ¾" Th.



Ceramic Tile - ST
Ageless, White Matte
6" x 24"

PT-2b
Balboa Mist,
Benjamin
Moore

PT-1b
Oxford White,
Benjamin
Moore



Engineered Wood Flooring - Timbertown
Knotty Oak
Reference Image - Control Sample by Ned



Porcelain Tile - (ST)
Firenze, Bianco Matte
24" x 48"



Quartz - Silestone
Miami, White Polished
Slab, ¾" Th.



Wood Laminate - Uniboard
Nobella, Whisper (Vert. Grain)



Laminate - Uniboard
Supermat, Shipshaw

BLUEBIRD FINISH PLAN.



Typical Floor Plans: Reference

Please note, all millwork *design* and cladding *placement* shall be typical with each Colour Scheme; alterations with Scheme are in colour only. Please note, tile layout differs from what is shown on Floor Plans. See Key Room Plans for suggested orientation & laying style.



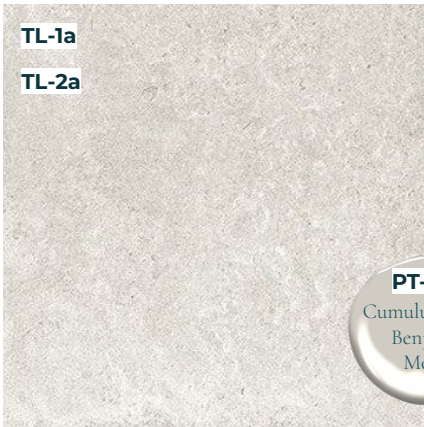
Alpenglow is the indirect sunlight reflected or diffracted by the atmosphere after sunset or before sunrise, casting softly defined shadows from behind the mountain summit.

ALPENGLLOW SAMPLES.



Note: Imagery for reference only. Refer to Control Samples.

ALPENGLOW COLOURS.



Porcelain Floor Tile - Stone Tile (ST)
Cliffstone, White Dover Matte
24" x 24" & 12" x 24" (varies with loc.)



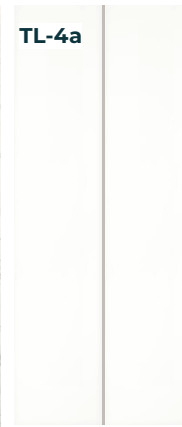
Carpet - Shaw Floors
Tonal Back Patio
Shoreline Haze, 100% Nylon



Porcelain Tile - ST
Gravel, White Matte
12" x 24"



Quartz - Silestone
Blanco, Orion Polished
Slab, 3/4" Th.



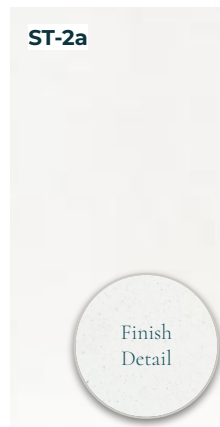
Ceramic Tile - ST
Ageless, White Matte
6" x 24"



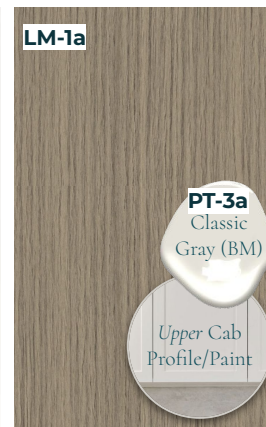
Engineered Wood Flooring - Timbertown
Knotty Oak
Reference Image - Control Sample by Ned



Porcelain Tile - (ST)
Firenze, Greige Matte
24" x 48"



Quartz - Silestone
Miami, White Polished
Slab, 3/4" Th.

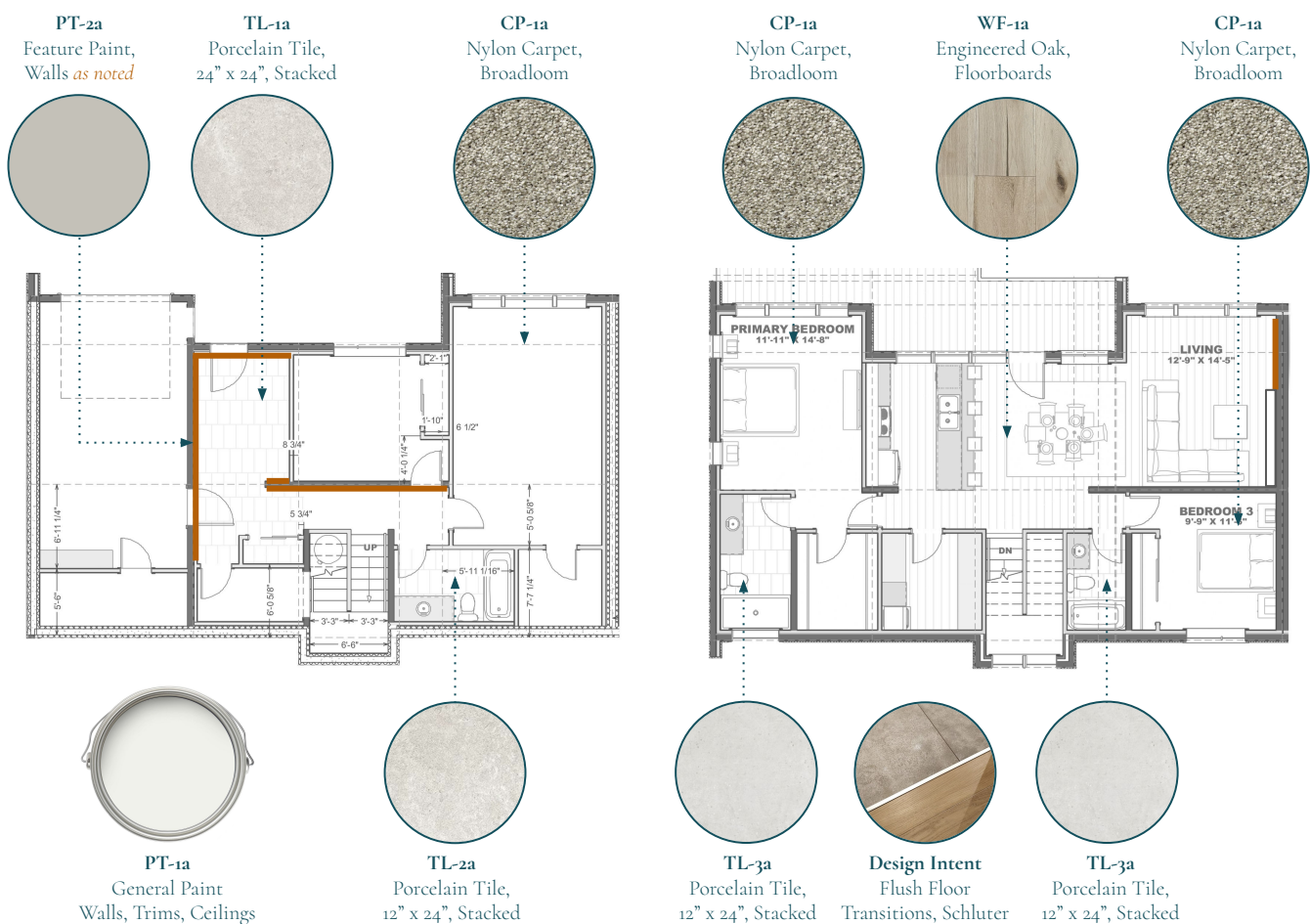


Wood Laminate - Uniboard
Omnia, Flux (Vertical Grain)



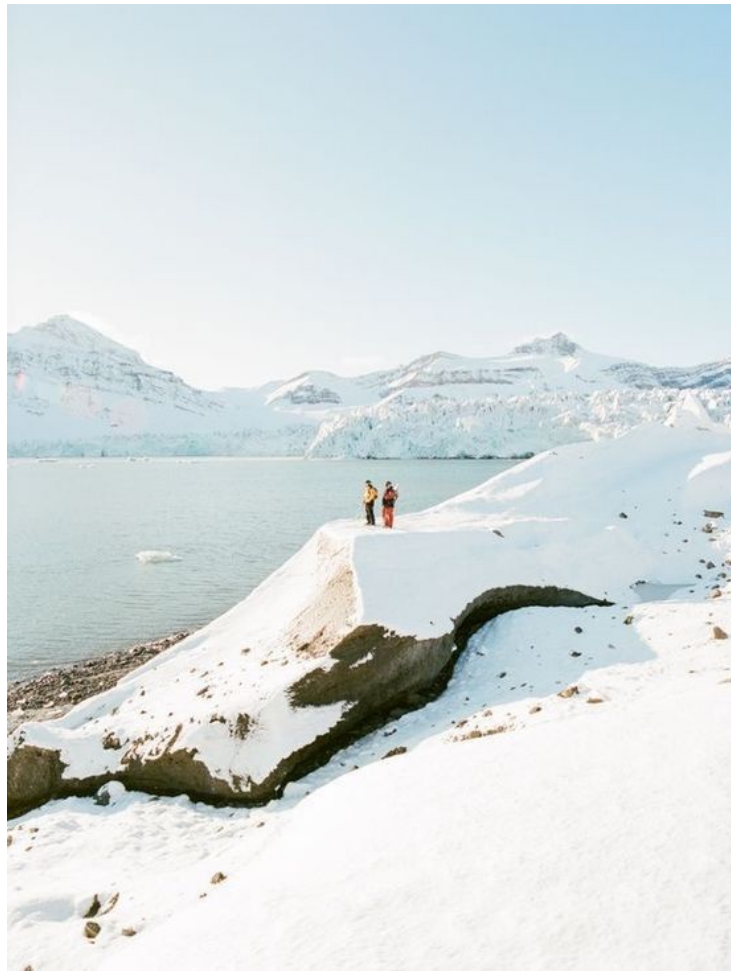
Laminate - Uniboard
Quietude, Supermat

ALPENGLLOW. FINISH PLAN.



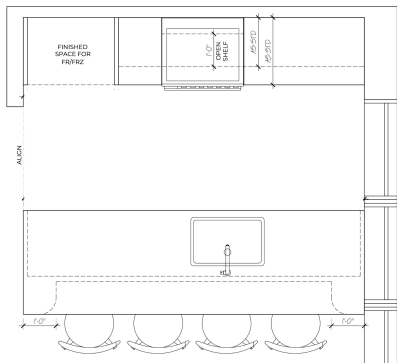
Typical Floor Plans: Reference

Please note, all millwork *design* and cladding *placement* shall be typical with each Colour Scheme; alterations with Scheme are in colour only. Please note, tile layout differs from what is shown on Floor Plans. See Key Room Plans for suggested orientation & laying style.



KITCHEN
CONCEPT,
BLUEBIRD.

BLUEBIRD KITCHEN.



Key Plan: Kitchen

*Note, header drawn at 8'-6"

*Note, island back/end panel detail to be verified



ST-2b
Quartz Counter
3/4" Thick, Slab



TL-5b
Tile Backsplash
24" x 48", Horiz.



LM-1b
Wood Laminate
Vertical Grain



H-1b
Edge Pull
Wood Cab's



Design Intent
Upper Cab's
1/4" Shaker Profile
Open Doors Under



PT-3b
Upper Cab Paint
5% - 10% Gloss



Sketch: Kitchen

Reference for Material Placement & Millwork Layout

Verify all design details/dimensions on-site and with final Plumbing & Appliance Specifications



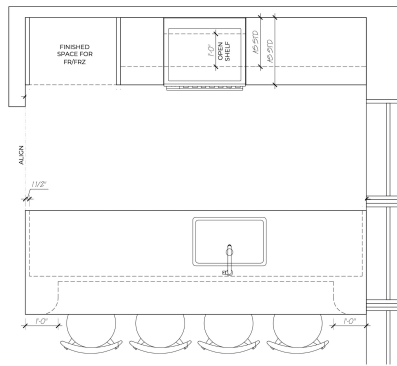
Sketch: Kitchen Island

Reference as noted



KITCHEN
CONCEPT,
ALPENGLLOW.

ALPENGLLOW KITCHEN.



ST-2a
Quartz Counter
¾" Thick, Slab

TL-5a
Tile Backsplash
24" x 48", Horiz.

LM-1a
Wood Laminate
Vertical Grain

H-1a
Edge Pull
Wood Cab's

Design Intent
Upper Cab's
¾" Shaker Profile
Open Doors Under

PT-3a
Upper Cab Paint
5% - 10% Gloss

Key Plan: Kitchen

*Note, header drawn at 8'-6"

*Note, island back/end panel detail to be verified



Sketch: Kitchen

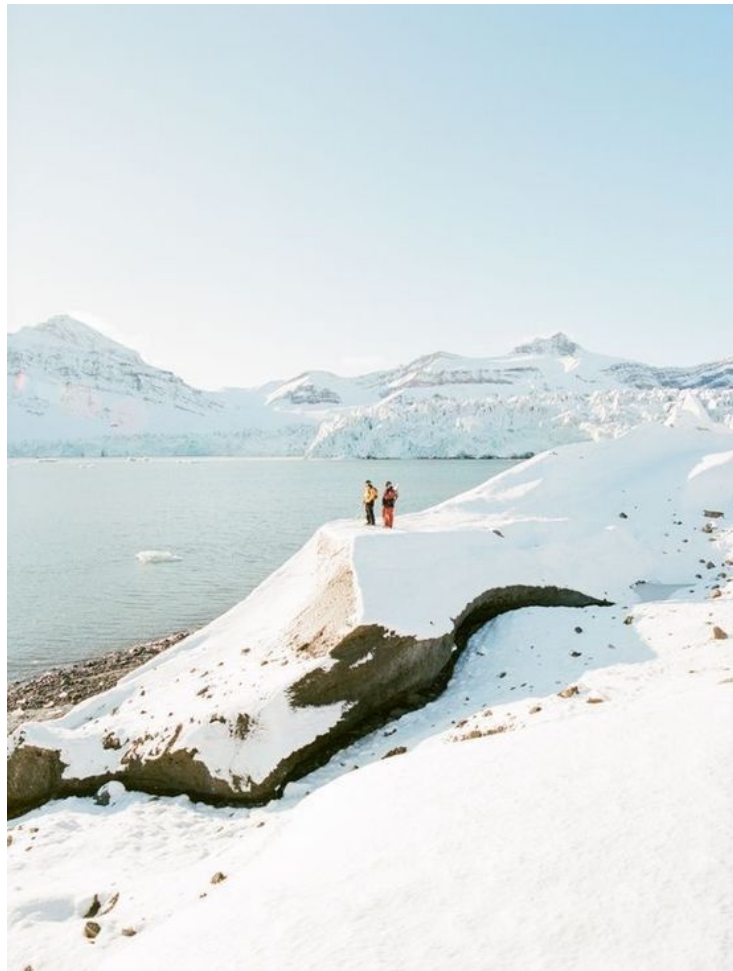
Reference for Material Placement & Millwork Layout

Verify all design details/dimensions on-site and with final Plumbing & Appliance Specifications



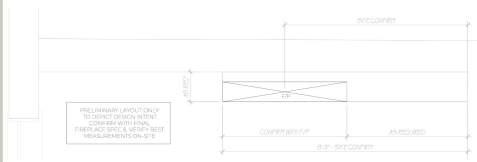
Sketch: Kitchen Island

Reference as noted

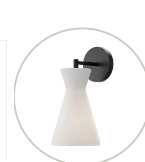


FIREPLACE
CONCEPT,
BLUEBIRD.

BLUEBIRD FIREPLACE.



Key Plan: Living Room, Fireplace Wall
Verify all design details/dimensions on-site



LT-2b
Wall Sconce
Black, Opal Glass



TL-5b
Porcelain Tile
24" x 48", Horiz.



MT-1b
Trim to Top
Miter Side Return



Design Intent
Linear Fireplace
60" L, Electric



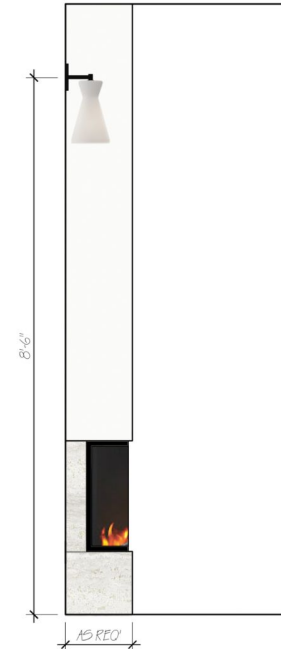
PT-1b
Wall Paint
General



PT-2b
Wall Paint
Feature



Sketch: Fireplace Wall, Front
Reference for Material Placement & Millwork Layout
Verify all design details/dimensions on-site and with final Fireplace Specifications

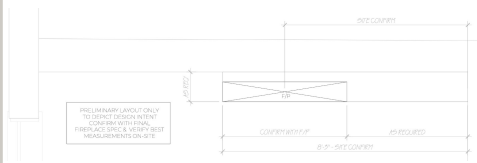


Sketch: Fireplace Wall, Side
Reference as noted

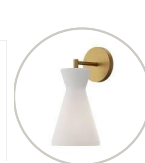


FIREPLACE
CONCEPT,
ALPENGLLOW.

ALPENGLLOW FIREPLACE.



Key Plan: Living Room, Fireplace Wall
Verify all design details/dimensions on-site



LT-2a
Wall Sconce
Brass, Opal Glass



TL-5a
Porcelain Tile
24" x 48", Horiz.



MT-1a
Trim to Top
Miter Side Return



Design Intent
Linear Fireplace
Electric 2 Sided



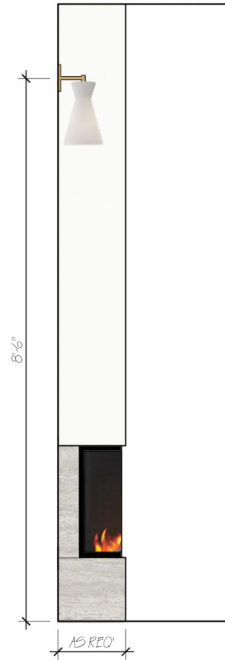
PT-1a
Wall Paint
General



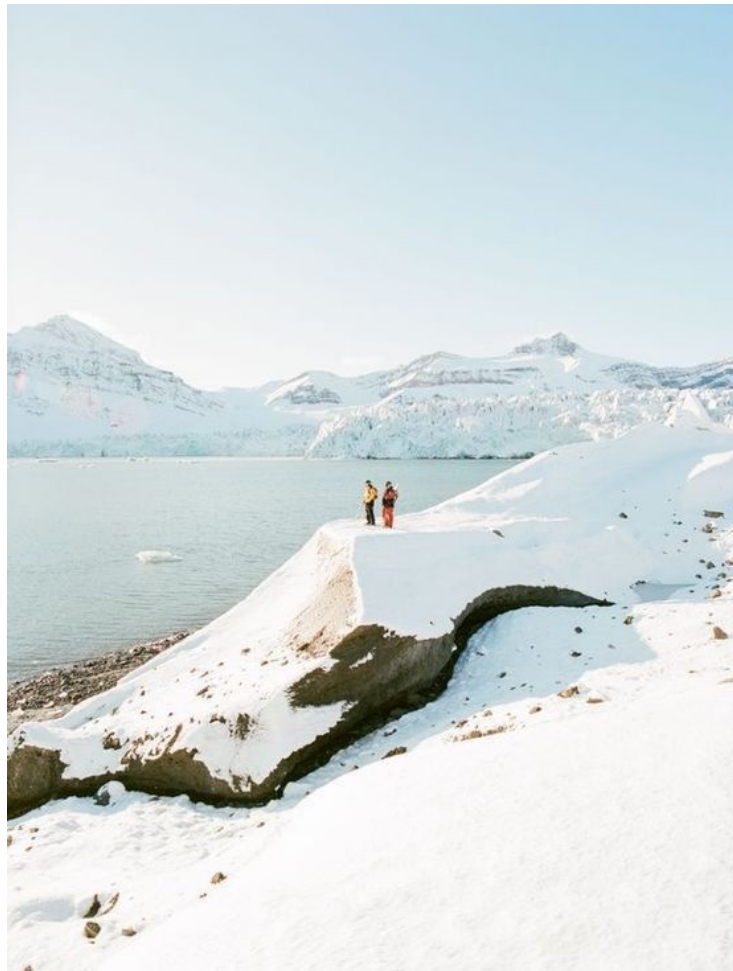
PT-2a
Wall Paint
Feature



Sketch: Fireplace Wall, Front
Reference for Material Placement & Millwork Layout
Verify all design details/dimensions on-site and with final Fireplace Specifications

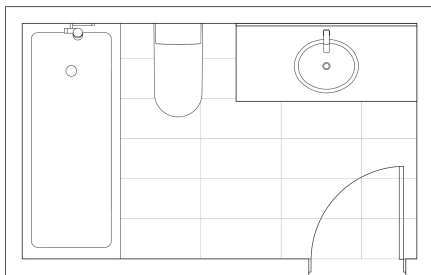


Sketch: Fireplace Wall, Side
Reference as noted



BATHROOM
CONCEPT,
BLUEBIRD.

BLUEBIRD BATHROOMS.



Key Plan: Lower Floor, Secondary Bathroom



LT-1b
Wall Sconce
Bronze, Opal Glass



ST-1b
Quartz Stone
3/4" Th, Slab



LM-1b
Wood Laminate
Vertical Grain



TL-2b
Porcelain Tile
12" x 24", Vertical



TL-4b
Ceramic Tile
6" x 24", Vertical

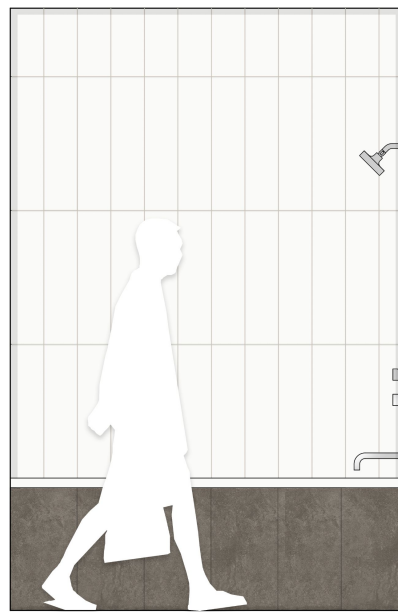


H1-b
Edge Pull
Doors/Drawers

MT-2b

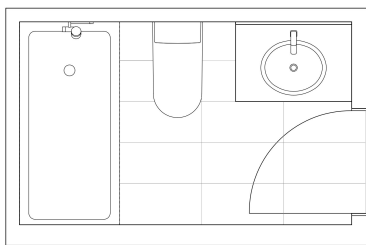


Sketch: Vanity Wall
Reference for Material Placement & Millwork Layout
Does not depict actual Plumbing Fixtures

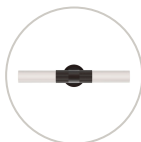


Sketch: Tub Wall
Reference for Material Placement
Does not depict actual Plumbing Fixtures

BLUEBIRD BATHROOMS.



Key Plan: Upper Floor, Main Bathroom



LT-1b
Wall Sconce
Bronze, Opal Glass



ST-1b
Quartz Stone
3/4" Th, Slab



LM-1b
Wood Laminate
Vertical Grain



TL-3b
Porcelain Tile
12" x 24", Vertical



TL-4b
Ceramic Tile
6" x 24", Vertical

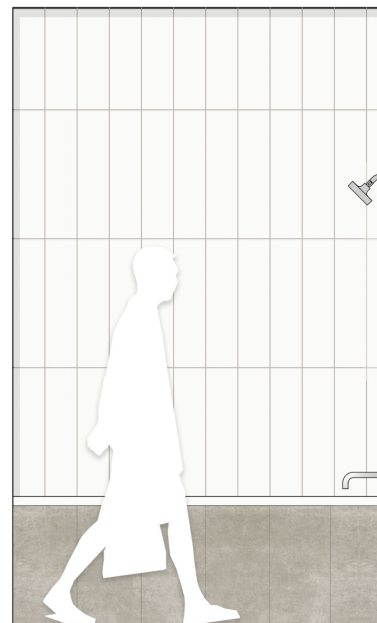
MT-2b



H1-b
Edge Pull
Doors/Drawers

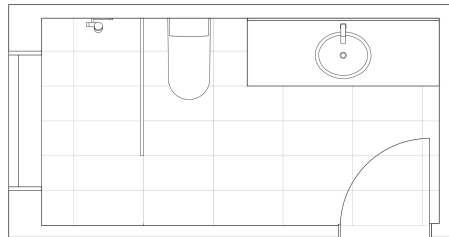


Sketch: Vanity Wall
Reference for Material Placement & Millwork Layout
Does not depict actual Plumbing Fixtures



Sketch: Tub Wall
Reference for Material Placement
Does not depict actual Plumbing Fixtures

BLUEBIRD BATHROOMS.



Key Plan: Upper Floor, Primary Bathroom
Note: Slope Shower Floor as Required



LT-1b
Wall Sconce
Bronze, Opal Glass



ST-1b
Quartz Stone
3/4" Th, Slab



LM-1b
Wood Laminate
Vertical Grain



TL-3b
Porcelain Tile
12" x 24", Vertical

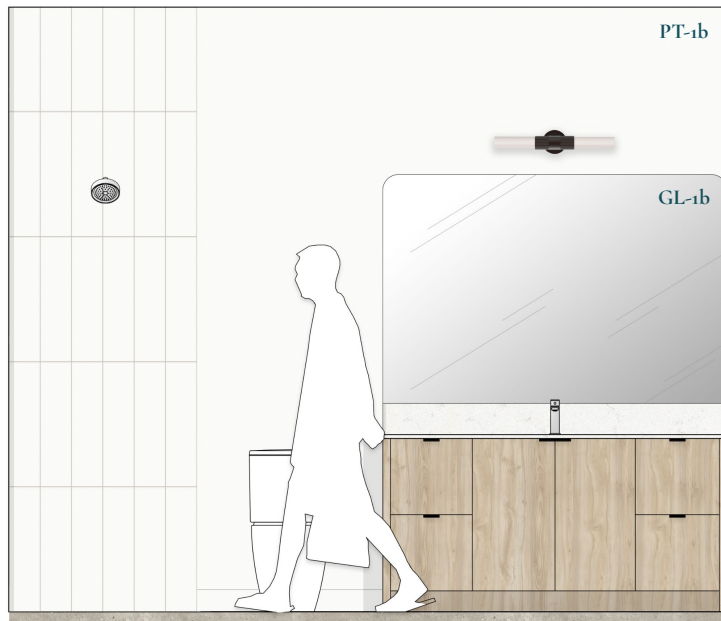


TL-4b
Ceramic Tile
6" x 24", Vertical



H1-b
Edge Pull
Doors/Drawers

MT-2b



Sketch: Vanity Wall
Reference for Material Placement & Millwork Layout
Does not depict actual Plumbing Fixtures

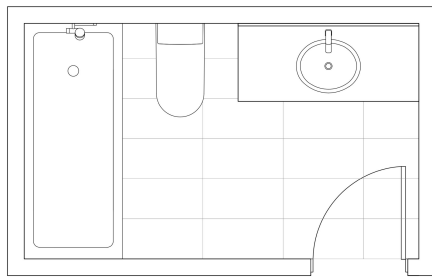


Sketch: Shower Wall
Reference for Material Placement only
Niche Size TBD - verify on-site with tile layout

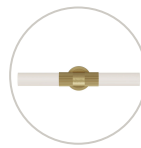


BATHROOM
CONCEPT,
ALPENGLLOW.

ALPENGLLOW BATHROOMS.



Key Plan: Lower Floor, Secondary Bathroom



LT-1a
Wall Sconce
Brass, Opal Glass



ST-1a
Quartz Stone
3/4" Th, Slab



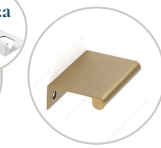
LM-1a
Wood Laminate
Vertical Grain



TL-2a
Porcelain Tile
12" x 24", Vertical



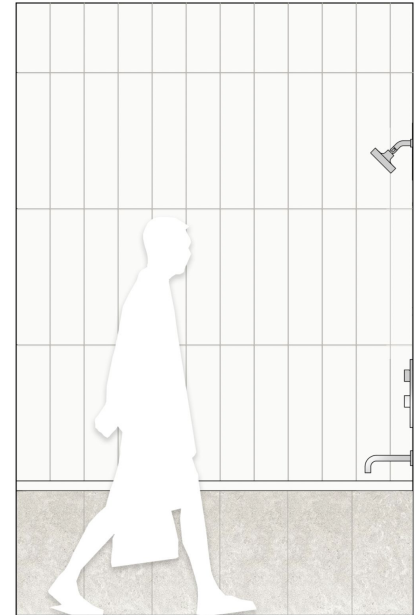
TL-4a
Ceramic Tile
6" x 24", Vertical



H1-a
Edge Pull
Doors/Drawers

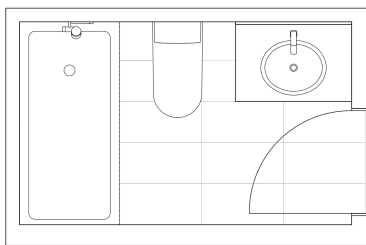


Sketch: Vanity Wall
Reference for Material Placement & Millwork Layout
Does not depict actual Plumbing Fixtures

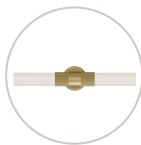


Sketch: Tub Wall
Reference for Material Placement on
Does not depict actual Plumbing Fixtures

ALPENGLOW BATHROOMS.



Key Plan: Upper Floor, Main Bathroom



LT-1a
Wall Sconce
Brass, Opal Glass



ST-1a
Quartz Stone
3/4" Th, Slab



LM-1a
Wood Laminate
Vertical Grain

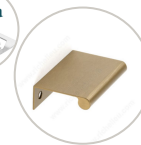


TL-3a
Porcelain Tile
12" x 24", Vertical



TL-4a
Ceramic Tile
6" x 24", Vertical

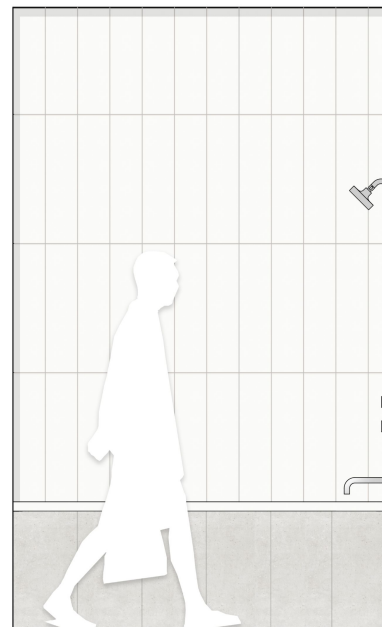
MT-2a



H1-a
Edge Pull
Doors/Drawers

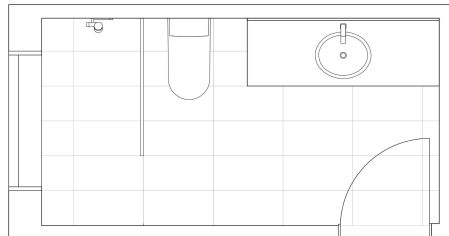


Sketch: Vanity Wall
Reference for Material Placement & Millwork Layout
Does not depict actual Plumbing Fixtures

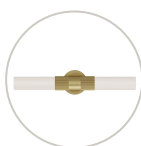


Sketch: Tub Wall
Reference for Material Placement
Does not depict actual Plumbing Fixtures

ALPENGLOW BATHROOMS.



Key Plan: Upper Floor, Primary Bathroom
Note: Slope Shower Floor as Required



LT-1a
Wall Sconce
Brass, Opal Glass



ST-1a
Quartz Stone
3/4" Th, Slab



LM-1a
Wood Laminate
Vertical Grain



TL-3a
Porcelain Tile
12" x 24", Vertical



TL-4a
Ceramic Tile
6" x 24", Vertical

MT-2a



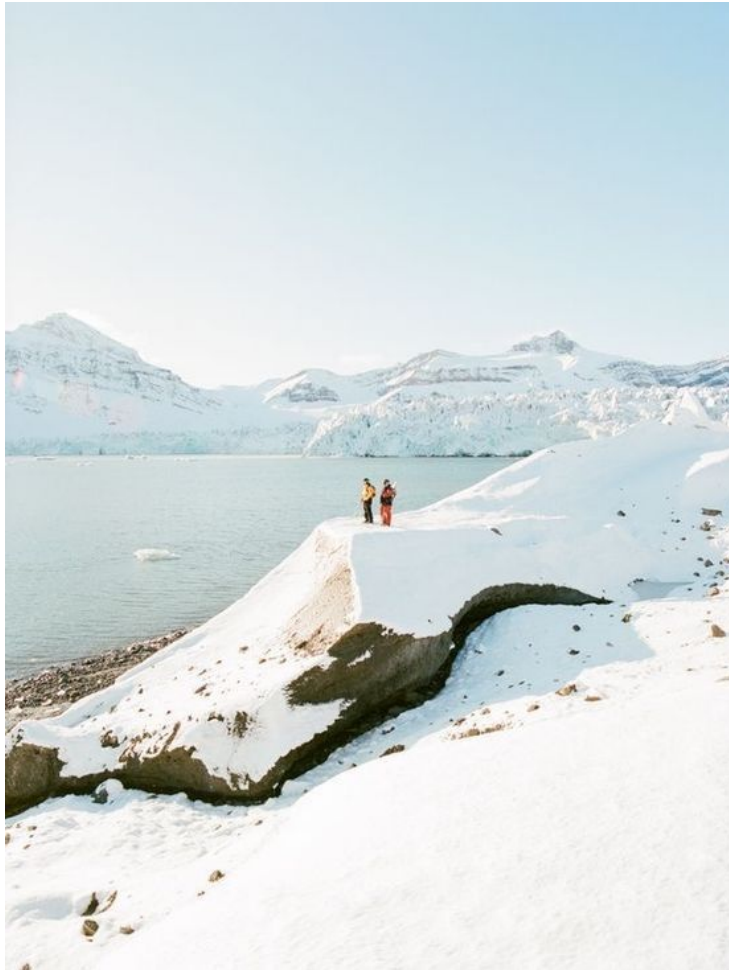
H1-a
Edge Pull
Doors/Drawers



Sketch: Vanity Wall
Reference for Material Placement & Millwork Layout
Does not depict actual Plumbing Fixtures

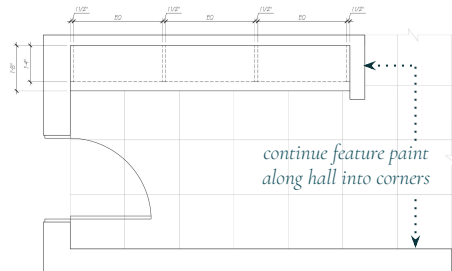


Sketch: Shower Wall
Reference for Material Placement only
Niche Size TBD - verify on-site with tile layout

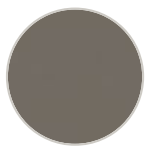


MUDROOM
CONCEPT,
BLUEBIRD.

BLUEBIRD MUDROOM.



Key Plan: Lower Floor, Mudroom
 *Note, header drawn at 8'-0"



LM-2b
 Flat Laminate
 TFL Panel



LM-1b
 Wood Laminate
 Vertical Grain



TL-1b
 Porcelain Tile
 24" x 24", Stacked



H-2b
 Metal Hook
 Retractable



H-1b
 Edge Pull
 Upper Cab's



PT-2b
 Feature Paint
 Walls - See Plan

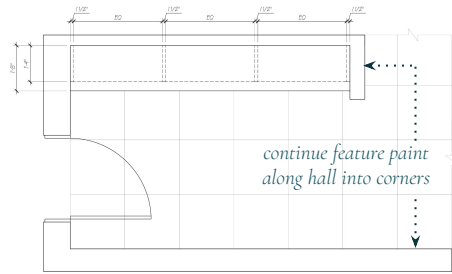


Sketch: Mudroom Wall
 Reference for Material Placement & Millwork Layout

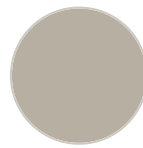


MUDROOM
CONCEPT,
ALPENGLLOW.

ALPENGLÖW MUDROOM.



Key Plan: Lower Floor, Mudroom
 *Note, header drawn at 8'-0"



LM-2a
 Flat Laminate
 TFL Panel



LM-1a
 Wood Laminate
 Vertical Grain



TL-1a
 Porcelain Tile
 24" x 24", Stacked



H-2a
 Metal Hook
 Retractable



H-1a
 Edge Pull
 Upper Cab's



PT-2a
 Feature Paint
 Walls - See Plan

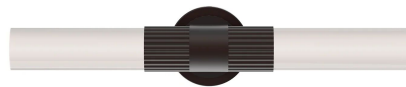


Sketch: Mudroom Wall
 Reference for Material Placement & Millwork Layout



SELECT FF&E,
**BLUEBIRD &
ALPENGLLOW.**

BLUEBIRD SELECT FF&E.



LT-1b
Bathroom Wall Sconce
Kuzco Lighting
Alora Rue, Warm Bronze & Gloss Opal Glas
22 ¼" Long
\$290.00 CAD per approx (trade)



LT-2b
Fireplace Wall Sconce
Kuzco Lighting
Alora Betty, Matte Black & Opal Glass
13 ¼" High
\$210.00 CAD per approx (retail)

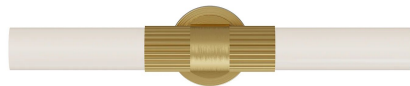


H-1b
Cabinet Handles
Richelieu
Modern Edge Pull, Brushed Black
70mm Long (2 ¾")
\$6.00 - 8.00 CAD per approx



H-2b
Mudroom Coat Hook
Richelieu
Retractable Metal Hook, Matte Black
76mm Long (3")
\$15.00 - \$18.00 CAD per approx

ALPENGLOW SELECT FF&E.



LT-1a
Bathroom Wall Sconce
Kuzco Lighting
Alora Rue, Satin Brass & Gloss Opal Glas
22 ¼" Long
\$290.00 CAD per approx (trade)



LT-2a
Fireplace Wall Sconce
Kuzco Lighting
Alora Betty, Aged Brass & Opal Glass
13 ¼" High
\$210.00 CAD per approx (retail)



H-1a
Cabinet Handles
Richelieu
Modern Edge Pull, Brushed Champagne Bronze
70mm Long (2 ¾")
\$6.00 - 8.00 CAD per approx



H-1b
Mudroom Coat Hook
Richelieu
Retractable Metal Hook, Satin Brass
76mm Long (3")
\$15.00 - \$18.00 CAD per approx

maison
kara.